



## IN SHORT:

- Annual General Meeting will be held Sunday April 5th, 2PM at Belwood Lions Hall in Belwood
- 150 Trees to be planted on the Trailway in the Spring.
- A golden opportunity to have parts of the Trailway incorporated into the new hospital plans.
- 5 Year Tree/Vegetation planting plan being developed for Trailway.
- Visit our booth at the Fergus Lions Club Home and Leisure Show being held at the Sportsplex on May 6,7,8.

## INSIDE THIS ISSUE:

Annual General Meeting - April 5th	1
Focus on Volunteers	2
Become a Board member	2
Mark your calendar	2
New hospital lands	3
Membership application form	3
Membership expires when?	4

## From the Chair

We have a lot to report but limited space so I'll keep my comments brief and hope you'll come to the AGM on April 5th to discuss the Trailway Projects in more depth.

We have a project for this spring to plant 150 container grown trees on the Trailway. This is part of our 5 year tree and vegetation planting plan we are in the process of developing. On page 2, you'll see a picture of the Trailway from Feb. 1999, much has grown and changed since that time. There are several planned developments that are either right next to the Trailway or close by. We want to be prepared by planning and planting now. Care of the Trailway is a never ending process. Come to the AGM and give us your ideas.

I'd like to take this opportunity to thank the Elora & Salem Horticultural Society for their generous donation of \$250 that will go towards our naturalization planting project.

Our AGM is coming up on April 5th, and we have two very interesting guest speakers, Sarah Wilhem and Denise Boyd-Dunlop from the County of Wellington Planning Department. Both are very involved in trails

throughout Wellington county, see below for details. Bring a friend along to the AGM, all are welcome.

On page 4, Chris Hart of Greenlands Centre Wellington, provides an update from last year's AGM. He is also looking for input from our knowledgeable group of hikers.

In closing, I'd like to ask for your continued support of the Association. Enjoy the newsletter, we'd love to see you at the AGM and, enjoy the Trailway.

J. Raymond Soucy



## Annual General Meeting

Sunday April 5, 2:00 p.m.  
Belwood Lions Hall , Belwood

Guest Speaker : Sarah Wilhelm (Planner) & Denise Boyd-Dunlop (Planning Technician) with the planning and Development Department of the County of Wellington.

## Topic: "The Trails of Wellington County"

Sarah & Denise will discuss the various trails in Wellington County (do you know them all?), the current initiative to map all of the public trails in the county and discuss some potential new trails being developed.

All Are Welcome



Baby Foxes by the trail, June 9th, 1996

# TRAIL NUGGETS

## Focus on Trail Volunteers

Volunteers are the ECTA! In a newsletter to the converted, I am stating the obvious, but my purpose is to acknowledge the contributions of the trail captains and the volunteer coordinator, say 'thank you' and encourage all members to join them in their efforts to develop and maintain our trailway.

The trail captains quietly take responsibility for a section of the corridor on the Elora Cataract Trailway. Most have been doing this for years as part of their routine of walking, running, biking, exercising the dog or just observing nature. They are the ones who put an extra garbage bag or pair of work gloves in their pockets to pick up whatever litter is lying about. They are there to protect the trail surface, the wildlife and the surrounding trees and plants. They may courageously remind users of good trail etiquette if they see abuse occurring. They call the Conservation Authorities to recommend plantings, repairs to banks or trailway surfaces and the removal of dangerous trees or branches.

Twice a year, in the spring and the fall, they organize informal clean up campaigns. Within a couple of hours, the winter or summer debris is being trucked off to a waste disposal site and the trail is ready to face a new season.

What all trail captains seem to have in common is a strong belief in a multiple use trailway that is kept as safe, clean and natural as possible. As Marilyn Cowie explained to me, 'We are preserving a valuable way of life that we are privileged to have right on our doorsteps. It's not an onerous task.' Marilyn along with the other captains hopes to encourage even more engagement in this process by all trail users. If you see interesting plants or wildlife in your particular section of the trail, let a trail captain or a board member know. When you renew your membership, tick off one of the volunteer activities. Become a trail captain or an assistant or if you aren't able to go that far, accept ownership of your favourite section of the trail and help respect, clean and preserve it. Best of all, teach your children to do the same.

The following volunteers participate as trail captains: Shirley and Deryk Smith, Wayne and Joan Prowse, Gerry and Dave Blacklock, Tom and Nancy Kroetsch, Marilyn Cowie and Al Schwieger, Doug and Val Anderson, Ray Bendel and Sandi Moss. The side trail which passes the museum and crosses the trestle bridge is maintained by the County with the help of Alec Calder and Jean Trask. Sandi Moss diligently calls and emails volunteers for a

variety of trailway activities that occur throughout the year. A special thank you to all who have devoted time and energy to making the trailway continue as a viable corridor of green from Elora to Cataract.

Gail Brown 

## Pictures Needed for Our Website

If you've looked at the web-site over the winter, you'll see we added many new pictures from trail users. We are always on the lookout for more to display. If you've taken a picture(s), you can easily share them with the rest of us. Simply Email your picture(s) to [webmaster@trailway.org](mailto:webmaster@trailway.org).

## ECTA to Participated in Several Events

The Trailway Association will attend several events this year to help increase the awareness of our Trailway and of the importance of all Trailways:

- Annual General Meeting, Belwood April 5th
- Fergus Lions Home Show, Sportsplex May 5,6,7
- Spring Planting Day—Date to be determined by delivery date of Tree stock

## Interested in Becoming an ECTA Board Member?

Are you a Trail user? Have ideas about what should be done to promote, enhance and protect the Trailways? Would you like to be involved with other like-minded people? The ECTA board might be just what you're looking for. The board meets 7 times a year. We have several projects on the go that will provide opportunity for you to be involved. If you're interested or have questions about the board, call Raymond Soucy (ECTA Chair) at 519-843-7703 or email [info@trailway.org](mailto:info@trailway.org).

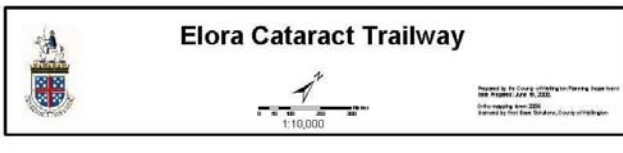
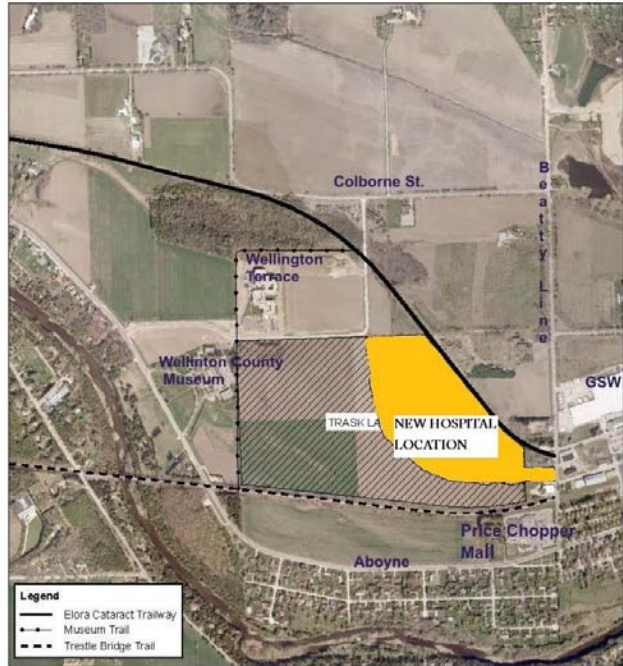


Trailway as it looked in Feb. 1999 Photo by: Marj Dow

## New Hospital Land Runs Along the Trailway

The previous newsletter mentioned the County and the Hospital had purchased a 105 acre parcel of land that would include approx. 30 acres for a new hospital. I recently attended a Rural Health Care Information Meetings held at Aboyne Hall on February 5th. One of the presentations showed where the new Hospital will be situated on the 105 acres parcel. This area (see map) of land borders the Trailway for some distance. This will provide us with a good opportunity to work at having direct access to the Trailway incorporated into the Hospital plan. There are already several trails bordering this parcel of land which can provide a solid basis for a trail network.

We are looking for information on how other hospitals and medical campuses include trailway in their programs and property. If you know of such programs, we would like to hear from you. Email us at [info@trailway.org](mailto:info@trailway.org), talk to one of our board members or call me (Raymond Soucy) at 519-843-7703. 



### Please Renew your Membership

As you have read in this newsletter, your association has been busy this year and we have a lot planned for the coming years. By renewing your membership, you provide the necessary funds to continue to operate the association and all the ongoing projects. Equally important, is a large membership demonstrates to everyone that many people care about the Elora Cataract Trailway and what happens to it. We should never take it for granted. We have two options, a one year membership for \$25 and a five year membership for \$100.



[www.trailway.org](http://www.trailway.org)

## Elora Cataract Trailway Association Membership Application Form

Renewal     New Membership    No. in your household \_\_\_\_\_

Name: \_\_\_\_\_

Address: \_\_\_\_\_

City: \_\_\_\_\_ Prov: \_\_\_\_\_ Postal Code: \_\_\_\_\_

Telephone: \_\_\_\_\_ email: \_\_\_\_\_

\$25—1 Year     \$100—5 Years

Mail to: Elora Cataract Trailway Association, PO Box 13, Elora, ON N0B 1S0

## Your Input Needed by Greendlands Centre Wellington

*GREENLANDS* Centre Wellington (GCW), a citizen's organization that advocates for healthy communities in the Township of Centre Wellington (TCW), is entering a period of positive growth in 2009.

This organization has been active for five years and has brought local communities, including Salem, Elora, Fergus, and Belwood as well as farmers and other rural landowners, together to determine ways in which a system of working lands, historical features, recreational spaces, and natural areas can be created for citizen use and enjoyment and for the protection of ecological values. Earlier work of the GCW has documented the unique natural and cultural heritage of the TCW. Public workshops have allowed important feedback and input from interested and concerned citizens and local government agencies such as the GRCA. The next phases of this work will provide guidelines and creative solutions in cooperation with municipalities, government agencies, Provincial Ministries and other stakeholders involved in shaping the township future.

With funding from the Ontario Trillium Foundation, GCW has been able to hire Chris Hart as project coordinator to establish a resource centre in Fergus. Chris is a Biologist, Environmental Planner and Landscape Architect who has worked with rural communities and their special needs for over 20 years. He was instrumental in the routing of the Grand Valley Trail through TCW and obtaining the Heritage River Designation for the Grand River valley. For many years Chris has run field trips including canoeing on the upper Grand River and also birding in the Elora Gorge for Ontario Nature. Chris has

lived and worked in Wellington and Waterloo Counties for most of his life.

*As part of the current work of Greenlands Centre Wellington, Chris needs to acquire not just background information on significant natural areas from reports and other secondary sources but also current information from naturalists who have walked the trails and bicycled the back roads in Centre Wellington over the years and who know the land and patterns of wildlife movement as well as the areas that have a high level of biodiversity and are deserving of conservation efforts whether they are currently protected or not. He is also interested in any input from birders who could describe locations where birds typically congregate and also their movements in this area of Wellington County as the seasons progress.*

*For more information or to assist with providing natural heritage information and possibly assist with field studies please give Chris a call or email him at the following contact:*

**GREENLANDS** Centre Wellington 140 St. Andrew St. W., Fergus, Ontario N1M 2W7.

Tel: 519-787-2805

Email: [gcw@sentex.ca](mailto:gcw@sentex.ca)

Web: [www.greenlandscw.org](http://www.greenlandscw.org)

Chris Hart



***"Thank you!"***

to **Sentex** for providing ECTA with Free Web Hosting.

Please consider **Sentex** when looking for an ISP.  
[www.sentex.net](http://www.sentex.net)

### When does my membership expire?

If you look at your mailing label, the top right corner will have the word EXPIRY: **year of expiry**. For example if you see EXPIRY: 2008, this means your membership is due. If you are receiving your newsletter electronically, your email notification will include this information. Your membership runs on a calendar year.

### ***Mark Your Calendar Now***

Fergus Lions Club Home & Leisure Show May 5,6,7. Come by our booth to discuss Trails and pick up a map of the Trailway.